



IMTT Demo Topic #4

Inspection of Landing Gear Cross-Bolt Hole through Bushing

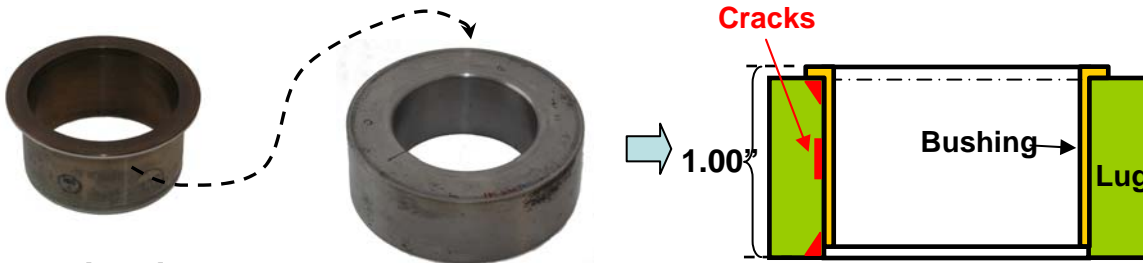
Bushing Scanner BHS 1.5: ID Range 0.50"~2.00"

- **Deep penetration:** Proprietary RFEC probe
- **Portable and Easy to setup:**
2.4lbs light weight scanner
- **Auto Scan:**
Maintain consistent inspection result
- **Auto Crack Identification:**
Minimize human factor



Bushing Scanner BSH 1.5

Specimen simulating Boeing 767 landing gear Cross-Bolt Hole

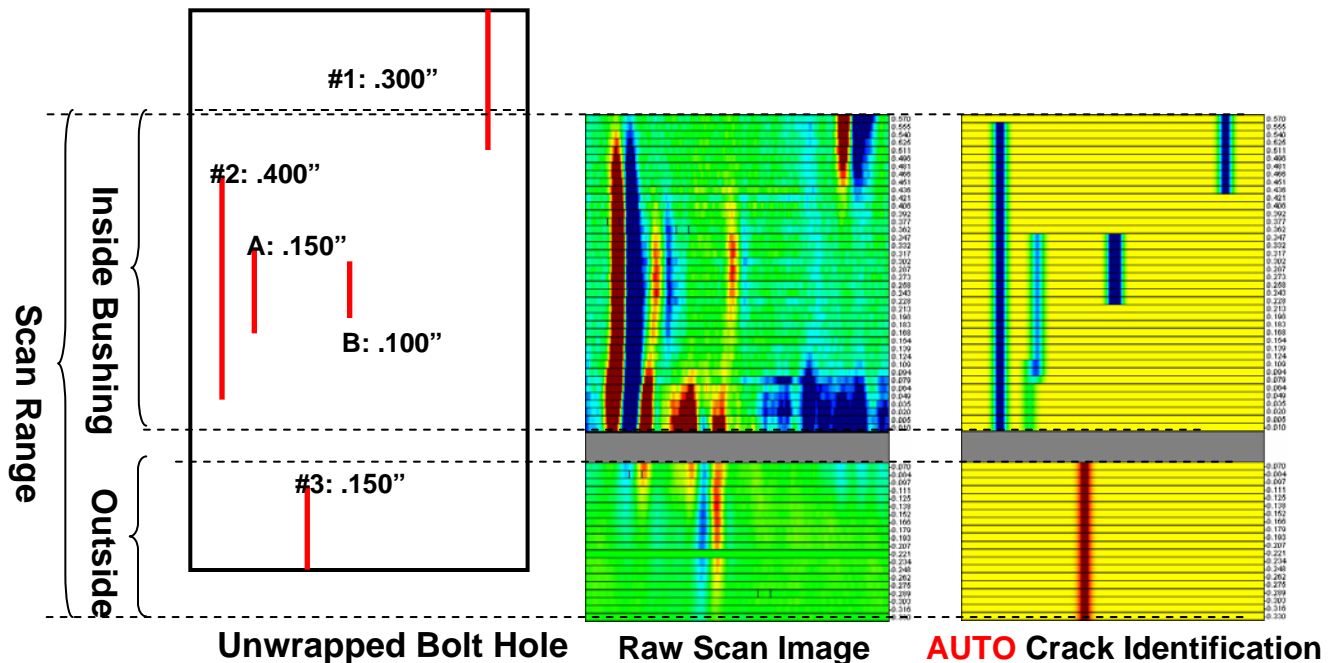


80mil Thick
Al-Ni-Bronze Alloy Bushing

Steel Hole Lug

Specimen Setup

Scan Result:



Unwrapped Bolt Hole

Raw Scan Image

AUTO Crack Identification