

Inspection of Wing Attach Fitting Bolt Hole through Bushing

Bushing Scanner BHS 0.5: ID Range 0.35"~0.60"

- Deep penetration:** Proprietary RFEC probe
- Portable and Easy to setup:**
1.5lbs light weight scanner
- Auto Scan:**
Maintain consistent inspection result
- Auto Crack Identification:**
Minimize human factor



Bushing Scanner BSH 0.5

Aircraft wing attach fitting sample

#3 - 0.075" x 0.090" crack

#4 - 0.060" x 0.020" crack

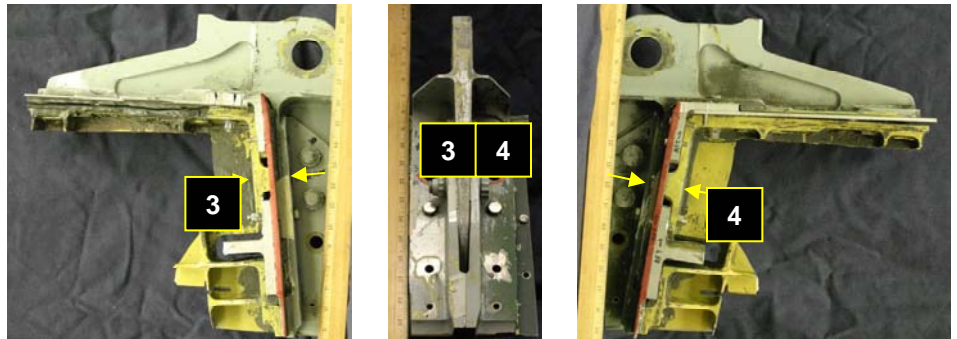
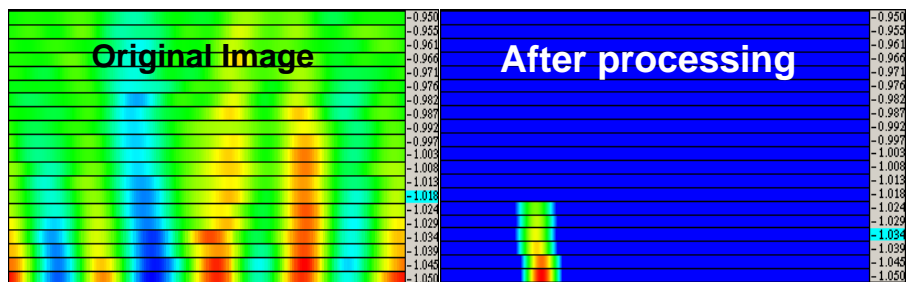


Image & crack identification



Test Results

